



**VIS-A-VIS, INC.**

7936 Camino Circle  
Miami, FL 33143

800-319-6014  
support@vitalinq.com

[www.vitalinq.com](http://www.vitalinq.com)



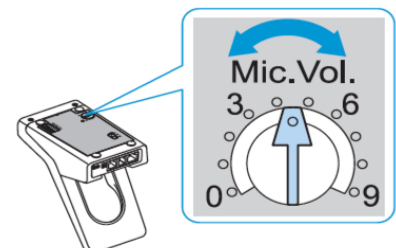
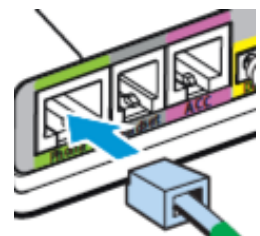
## Supplemental Instructions for using Sennheiser SD Office Wireless Headsets with the Vitalinq 94A-07 Communication

The information in this document is intended to provide guidance when using Sennheiser SD Office wireless headsets with the Vitalinq 94A-07 Cath Lab communication system. Illustrations shown in these instructions were taken from the Sennheiser Instruction Manual. **For a description of all the features specific to the headset and for important safety information, please refer to the manual that is included in your wireless headset packaging.** Should you require additional information or have any questions, please call Vis-A-Vis Customer Service at 800-319-6014 or email [Support@vitalinq.com](mailto:Support@vitalinq.com).

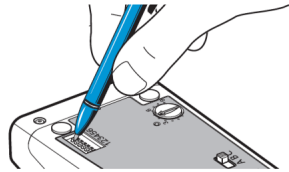
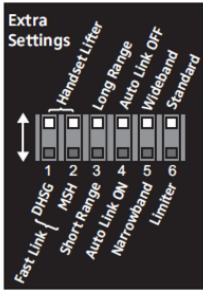
### **Option 1 - Using a Wireless Headset with the Headset Jack**

**A Sennheiser SD Office wireless headset can be plugged into either of the two jacks labeled “Headset” on the front of the console instead of using a corded headset at these locations. A headset plugged into this jack will allow two-way communication with the procedure room and any headsets plugged into the “Yellow” jack on the rear of the console.**

- 1) Locate the “Sennheiser Crossover Cable” (P/N: SCC0312). This cable is made by Vis-A-Vis and ships with the Vitalinq - it is not a cable from the Sennheiser wireless headset packaging. **It is not a cable in the Sennheiser wireless headset packaging.** This cable has an RJ45 connector on one end and a RJ9 connector on the other end. It measures approximately 24” in length.
- 2) Plug the end of the cable with the RJ9 connector into one of the two jacks labeled “Headset” on the front of the console. Plug the other end of the cable with the RJ45 connector into the jack labeled “Phone” on the rear of the Sennheiser wireless headset base station (color coded green).
- 3) Adjust the Microphone volume on the bottom of the base station to approx. 6. This can be fine tuned later as needed.

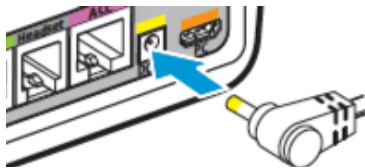


4) It is recommended that the radio range of the base station be reduced from its factory setting as the standard range is not necessary in the typical Cath or EP lab environment. Reducing the radio range will also eliminate potential interference between base stations if more than one is being used and will extend the headset battery life. Do this by placing the #3 DIP switch on the bottom of the base station down as shown below.

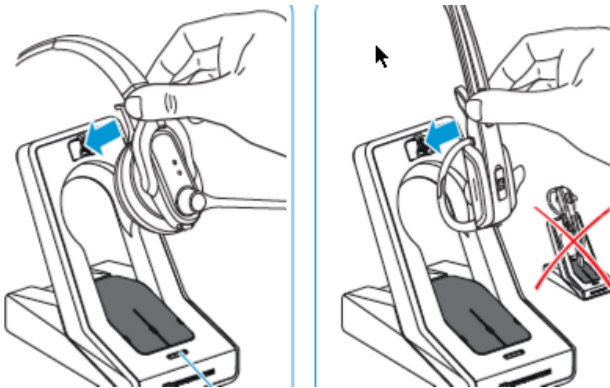


Switch position	Function
 1 2 3 4 5 6	<b>Standard radio range</b>
 1 2 3 4 5 6	<b>Reduced radio range</b> Use this setting in order to avoid interference with other DECT systems Range of approx. 10 m indoors

5) Connect the power supplies to the Sennheiser base stations(s). The base stations should power on. Make sure the white light on the right side of the base station is illuminated (next to a symbol of a phone). If not, lightly press on the phone symbol to place the base station in Phone mode.



6) Place the wireless headsets on their base stations and allow them to charge for at least 20 minutes.



7) Once charged, simply lift the headset from the base station and press the Link button for 5 seconds (see instructions on following page).

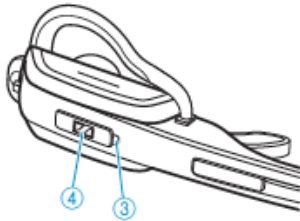
Your wireless headsets should now be functioning and capable of two way communication with each other and with any headset which is plugged into a "Headset" jack on the front of the Vitalinq console.

## Switching the headset on/off

**i** If you place the headset into the base station, the headset automatically switches to standby mode. In standby mode, the power consumption is very low and the radiated power is reduced to a minimum. The HEADSET LED ③ lights up blue and the rechargeable battery is being charged.

### Switching the headset on

- ▶ Press and hold the LINK button ④ for 5 seconds. The HEADSET LED ③ flashes blue 3 times and the wireless link to the base station is established (where required). An ascending confirmation beep is heard in the headset.



### Switching the headset off

- ▶ Press and hold the LINK button ④ for 5 seconds. The HEADSET LED ③ flashes red 3 times.

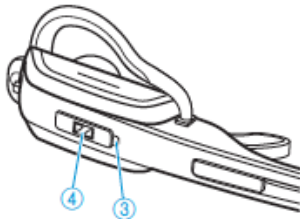
## Establishing a wireless link between headset and base station

To establish a wireless link between headset and base station:

- ▶ Press the LINK button ④ on the headset. The link is established. The LINK LED ④ lights up blue and the HEADSET LED ③ flashes blue.

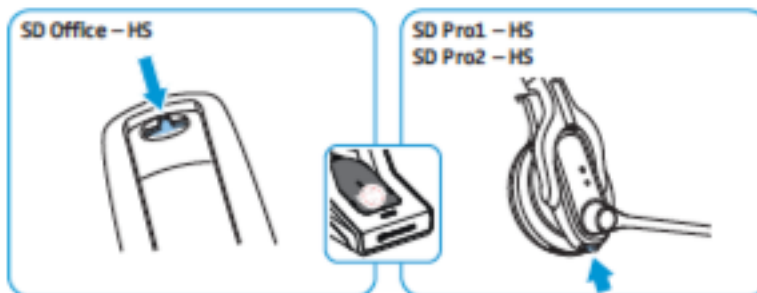
To disconnect a wireless link between headset and base station:

- ▶ Press the LINK button ④ on the headset. The link is disconnected. The LINK LED ④ and the HEADSET LED ③ go off.



## Muting the headset's microphone

- ▶ Press the Audio button. The microphone is muted. While the microphone is muted, the Link LED ■ on the base station flashes red.



### Unmuting the headset's microphone

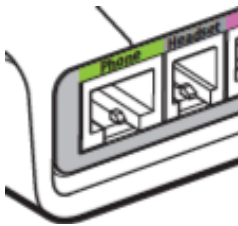
- ▶ Press the Audio button. You hear a beep in the headset. The muting is canceled and the Link LED ■ on the base station lights up blue.

PLEASE REFER TO THE SENNHEISER INSTRUCTION MANUAL FOR A FULL DESCRIPTION OF YOUR WIRELESS HEADSET'S FEATURES.

## Option 2 - The Yellow Jack

Using a special adaptor cable, up to two wireless headsets can be connected to the “Yellow” jack on the rear of the Vitalinq 94A-07 console. Two-way communication is then possible between the wireless headset(s) plugged into the “Yellow” jack and any headset (corded or wireless) plugged into one of the two “Headset” jacks located on the front of the Vitalinq console. Note that headsets plugged into the “Yellow” jack do not provide two-way communication with the procedure room.

- 1) Locate the “Sennheiser Yellow Jack Cable” (P/N: SYJC0312). This cable is made by Vis-A-Vis and ships with the wireless headset when ordered from Vis-A-Vis. **It is not a cable in the Sennheiser wireless headset packaging.** This cable has a ethernet (RJ45) connector on one end with two cables leading from it to a pair of ethernet connectors. It measures approx. 24” in length.
- 2) Plug the ethernet connector with the two cables attached to it into the jack on the rear of the Vitalinq console labeled “Yellow”.
- 3) Plug one of the two ethernet connectors into the jack labeled “Phone” on the rear of one of the Sennheiser wireless headset base stations (color coded green). Repeat for the other Sennheiser base station. You should now have both base stations plugged into the “Yellow” jack on the Vitalinq console via the “Sennheiser Yellow Jack Cable”.



- 4) Follow steps 4 through 8 under “Option 1” of these instructions to complete the setup.

Note that the foot switch included with the corded headset is not necessary and should be disconnected when using a wireless headset plugged into a “Headset” jack. To mute the wireless headset, use the mute feature on the headset itself when you do not wish to be heard in the procedure room. See instructions on page 3.