



7936 Camino Circle  
Miami, FL 33143  
[support@vitalinq.com](mailto:support@vitalinq.com)  
(800) 319-6014
















# **Operations and Installation Manual**

## **Vitalinq™ Model 94W-15**

### **Wireless Headset System**



## For Your Safety

1.  Read, follow and keep these instructions and the Safety Guide enclosed with each Sennheiser D 10 Wireless Headset.
2.  Heed all warnings.
3.  Do not use this apparatus near water.
4.  Clean only with dry cloth.
5.  Install in accordance with the manufacturer's instructions.
6.  Do not install near any heat sources such as radiators, heat registers, stoves, or other apparatus (including amplifiers) that produce heat.
7.  Do not defeat the safety purpose of the polarized or grounding-type plug. A polarized plug has two blades with one wider than the other. A grounding type plug has two blades and a third grounding prong. The wide blade or the third prong are provided for your safety. If the provided plug does not fit into your outlet, consult an electrician for replacement of the obsolete outlet.
8.  Protect the power cord from being walked on or pinched particularly at plugs, convenience receptacles, and the point where they exit from the apparatus.
9.  Only use attachments/accessories specified by the manufacturer.
10.  Unplug this apparatus during lightning storms or when unused for long periods of time.
11.  Refer all servicing to qualified service personnel. Servicing is required when the apparatus has been damaged in any way, such as power-supply cord or plug is damaged, liquid has been spilled or objects have fallen into the apparatus, the apparatus has been exposed to rain or moisture, does not operate normally, or has been dropped.
12.  To reduce the risk of fire or electric shock, do not expose this apparatus to rain or moisture.
13.  Excessive sound pressure from earphones and headphones can cause hearing loss.

Please understand that Vis-A-Vis, Inc. does not accept liability for damage arising from abuse or misuse.

# **Table of Contents**

## **Contents**

For Your Safety	3
Table of Contents	4
The Vitalinq™ 94W Wireless Headset System	1
Optional Configurations and Notes	2
System Overview	3
Setup and Connections	7
Charging the headset before first use	9
Joining the conversation - Auto Link	9
Manually Disconnecting / Establishing a Wireless Link	10
Adjusting the Wearing Styles	11
Making Audio Adjustments	13
Charging the Headset	15
Cleaning and Maintaining the Headset System	16
Replacing the Ear Pads	17
Replacing the Headset's Rechargeable Battery	18
If a Problem Occurs	19
NOTES	20

# **The Vitalinq™ 94W Wireless Headset System**

The Vitalinq™ 94W is a wireless headset system making it possible to have two-way communication between as few as two and up to nine users from a single 94W console. The 94W has been designed to be used in environments typical of electrophysiology labs or anywhere where reliable communication between two or more individuals is necessary. The Vitalinq™ 94W is easy to use, versatile and offers the following features and characteristics:

- Quick link establishment between headset and base station
- Excellent sound quality ensures optimum speech intelligibility
- Range of up to 33 ft (180 ft in long range mode)
- Monaural headset with 2 wearing styles; earhook or headband with ear pad
- Noise canceling microphone for optimum speech intelligibility without annoying background noise
- Long battery life. Up to 12 hours of talk time and up to 4 days of standby time
- Quick and convenient charging of the headset (approx. 1 hour)

## **DECT**

The Sennheiser Communications wireless headsets recommended by Vis-A-Vis and provided for use with the Vitalinq™ 94W when headsets are purchased with the 94W provide DECT radio technology. Due to a dynamic adjustment of the transmission power, the DECT technology offers an increased transmission range, minimized radiation exposure and has good energy efficiency. Encrypted radio transmission provides maximum security for wireless communication.

## **Wireless system includes**

Vitalinq™ 94W console

Sennheiser D 10 wireless headsets and base stations (up to 9 per console)

Adjustable earhooks (1 for each headset)

Headbands (1 for each headset)

Data cables (1 for each headset)

Console power cord

9 outlet 110 volt AC power strip

Operations manual

## **Optional Configurations and Notes**

The “SILVER” jack on the Vitalinq 94W can be used in the following ways:

1. To add an additional wireless headset to the system making it possible for 9 wireless headsets to have two-way communication with each other.
2. To connect to the “SILVER” jack on a Vitalinq 94A-07 console. In this configuration, the 94W would also have two-way communication with any headsets plugged into the “HEADSET” jacks on the front of the 94A console.
3. To connect a corded headset. This headset would have two-way communication with all existing headsets connected to the 94W. This configuration requires custom manufacturer settings.
4. To connect two 94W consoles together. This would allow two-way communication between up to 16 wireless headsets. This configuration requires custom manufacturer settings.

Each base station has a power supply. The Vitalinq 94W console and up to 8 base station power supplies plug into a provided 9 outlet 110 Volt AC power strip. If using a 9 headset configuration, the console can be plugged into a wall outlet.

Data cables are provided to connect each base station to the Vitalinq 94W console.

Please contact Vis-A-Vis for additional information regarding any non-standard configuration or to obtain custom cable lengths.

**Our phone number is 1-800-319-6014, or email us at [support@vitalinq.com](mailto:support@vitalinq.com). Please visit us on the web at [www.vitalinq.com](http://www.vitalinq.com).**

We would love to hear from you and we are very interested in helping you to solve any problems or answer any questions you may have with the operation or installation.

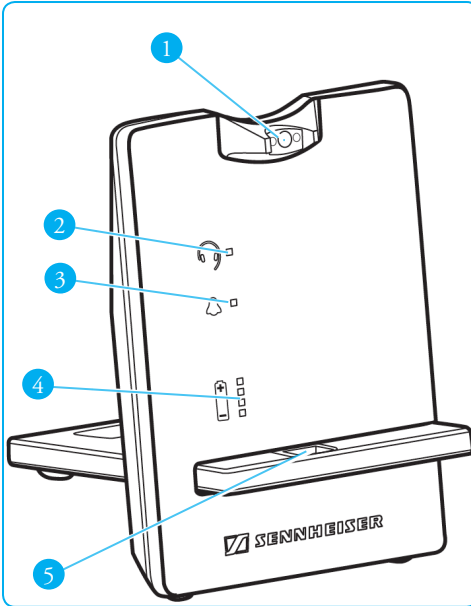
An electronic version of this manual can be obtained at our web site.

Thank you for your business!

# System Overview

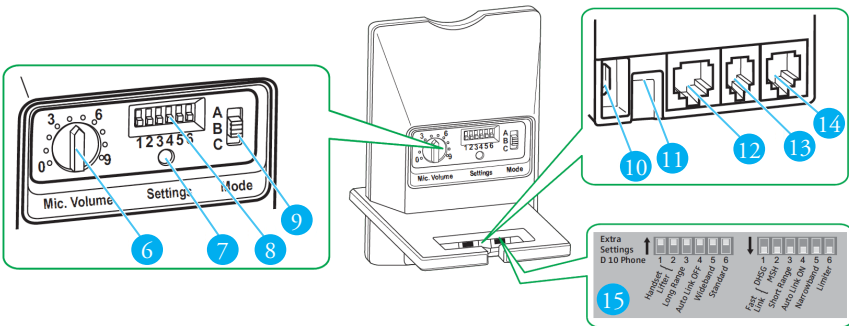
## Overview of the base station

### Front



- 1 Magnetic holder with charging contacts
- 2 Link LED
- 3 Incoming call LED (NOT USED)
- 4 Charge status LED
- 5 Headset holder

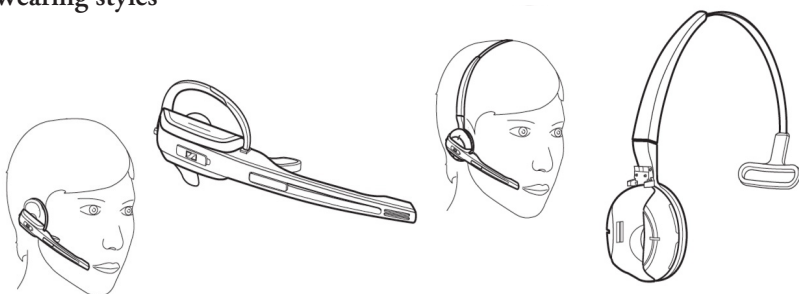
### Rear



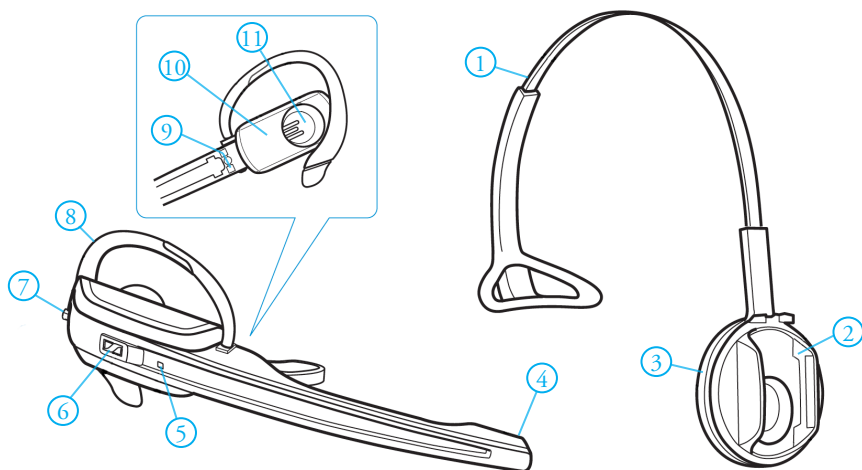
- 6 Microphone volume control
- 7 Set button
- 8 DIP switch row 1 to 6
- 9 ABC switch
- 10 PC socket (NOT USED)
- 11 DC IN socket
- 12 Phone socket
- 13 Handset socket (NOT USED)
- 14 ACC socket (NOT USED)
- 15 Sticker for DIP switches (located underneath the headset holder)

## Overview of the headset

### Wearing styles



### Features



- |                  |                                  |
|------------------|----------------------------------|
| ① Headband       | ⑦ Audio button: volume +/-, mute |
| ② Headset holder | ⑧ Ear hook, adjustable           |
| ③ Ear pad        | ⑨ Charging contacts              |
| ④ Microphone     | ⑩ Battery compartment            |
| ⑤ Headset LED    | ⑪ Ear piece                      |
| ⑥ Link button    |                                  |

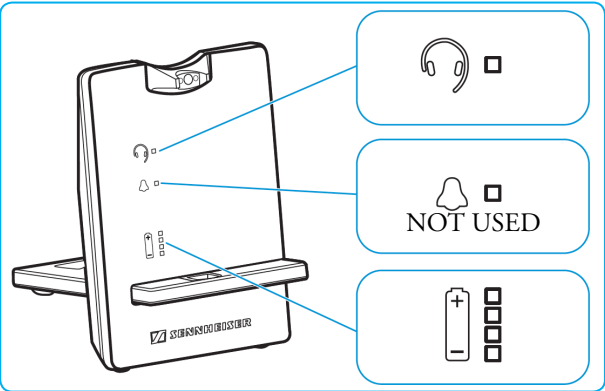


# Overview of the headset buttons

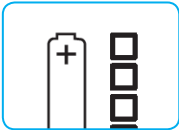


Action	Functions
Press the LINK button 7	Establishes/disconnects the link between headset and base station
Press and hold the LINK button 7 for 5 seconds	Switches the headset on/off
Push the AUDIO button 8 upwards/downwards	Increases/reduces the volume of the acoustic signals or the audio volume
Press the AUDIO button 8	Mutes the microphone/unmutes the microphone
Press and hold the LINK button 7 and the AUDIO button 8 for 5 seconds	GAP pairing mode (NOT USED)
	Changes the direction of the volume up/down function of the Audio button

# Overview of the base station LEDs

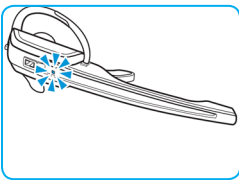


LINK LED	Meaning
lights up blue	Active link to the headset
lights up red	No link to the headset
flashes red	Headset is muted
is off	Standby mode. Base station is not powered.



Charge Status LED (white = lit)	Meaning
LED segment 1 flashes	Rechargeable battery is almost flat
LED segments 1 - 4 are lit	Rechargeable battery is charged

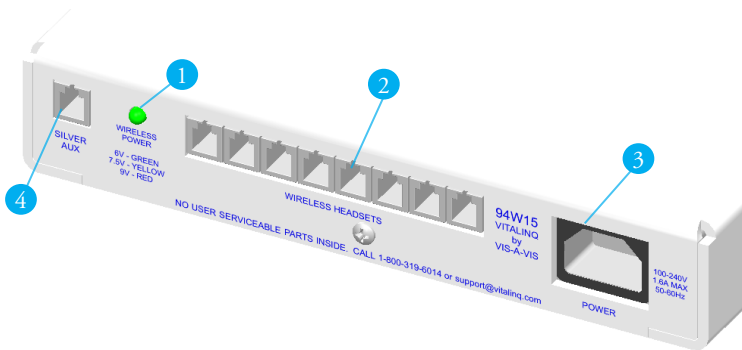
# Overview of the headset LEDs



## Headset

HEADSET LED	Meaning
lights up blue	Charging mode
flashes blue slowly	Active link to base station
flashes red 3 times	Rechargeable battery is almost flat
is off	Standby mode or headset is switched off/ headset's rechargeable battery is fully charged
flashes blue/red	Special pairing mode / direction of the volume up/down function of the Audio button is being changed

# Overview of the console



- 1 Wireless power LED
- 2 Wireless Headset jack - total of 8
- 3 Power Connector
- 4 Silver jack (Can be used for an additional wireless headset and optional configurations. See “Optional Configuration” section.)

# Setup and Connections

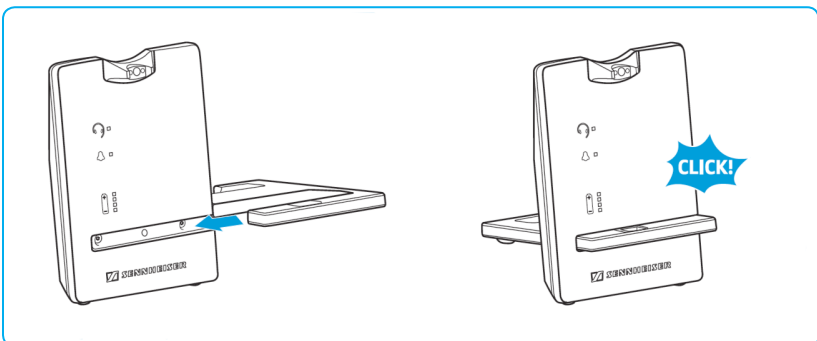
The Vitalinq 94W wireless headset system is extremely easy to setup.

1. Choose a location for the 94W console that:
  - Provides adequate wireless headset coverage. The range of the headsets is approximately 33 feet (up to 180 feet in long range mode).
  - Has suitable surface area for placement of the 94W console and the base stations. This might be a shelf in the procedure room, a cart or a countertop in the control room. The console can also be wall mounted if desired next to a shelf on which the base stations could be placed.
  - Has a 110 volt AC outlet for connecting the supplied 9 outlet power strip.

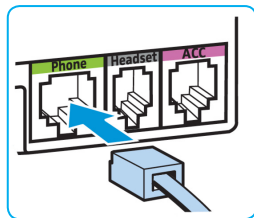
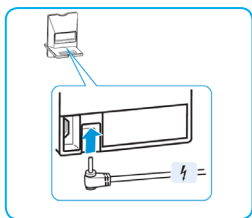
One layout which works well is shown below.



2. Remove each of the wireless base stations from their packaging.
3. Insert the headset holder into the recess of the base station. It should “click” into position once fully inserted.

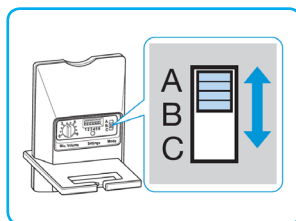
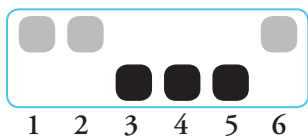


4. Repeat step 3 for the remaining base stations.
5. Plug the power strip into a 110 volt AC outlet.
6. For each base station, locate the power supply and plug one end into the power strip and the other end into the **DC IN** socket (marked yellow) on each of the base stations.
7. For each of the base stations, locate a cable which has a RJ9 (handset) connector on one end and a RJ45 (ethernet) connector on the other end. Plug the ethernet connector into the **Phone** socket (marked green) on the base station.



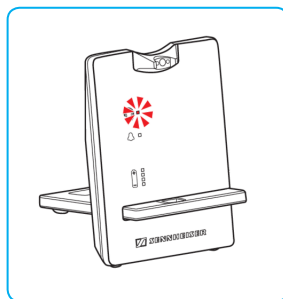
Plug the RJ9 end of the cable into one of the eight (8) jacks on the 94W console labeled **Wireless Headsets**.

8. The DIP switches on the back of the base station have been pre-positioned prior to shipment and should be set as follows:



9. The ABC switch should be placed in the "A" position.
10. Plug the power cord for the 94W console into the console and the other end into the 110 volt AC power strip. The LED on the front of the 94W console will light up green indicating power to the console. The LED on the rear of the 94W console will light up green. The Link LED light on each of the connected base stations will light up red indicating power to the base stations.

If the system is not to be used for an extended period of time, unplug the power cord from the wall outlet.

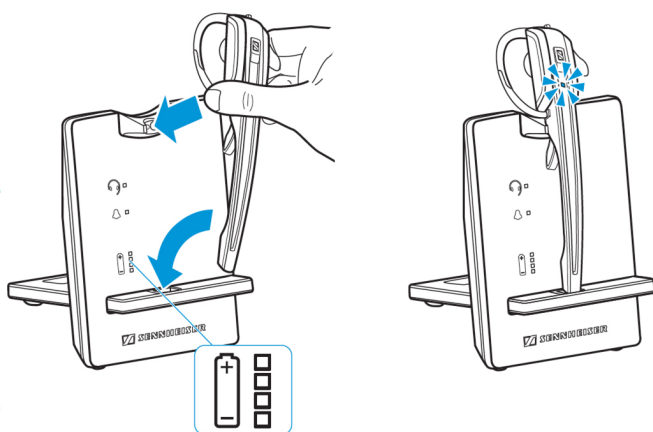


## Charging the headset before first use

The 94W console automatically establishes two-way communication between all connected base stations. However, it is **important that each headset be placed back on the base station from which it was originally removed**. Therefore, each headset and base station pair have been assigned a color code.

Before using the headset for the first time, the rechargeable battery should be charged for at least 20 minutes. A complete charge will take approximately 60 minutes.

During the first charging, it may take up to 5 minutes for the Headset LED to light up blue.



## Joining the conversation - Auto Link


To begin using a headset, simply remove the headset from the base station, place it on your head and join the conversation. The Vitalinq 94W takes care of linking the individual headsets/base stations with each other.



Your base stations have been preconfigured such that removing the headset from the base station automatically establishes the wireless link with the base station. If this does not occur, check that the DIP switches are positioned as described in the section “Setup and Connections”.

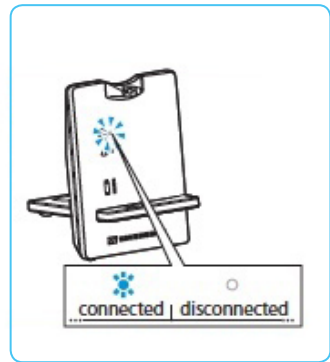
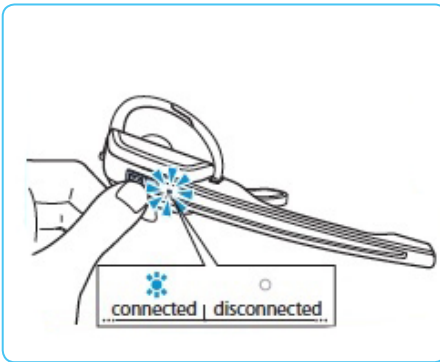
Procedures for manually establishing a link, disconnecting a link, charging, changing wearing styles and other features of the headset are outlined in the remaining sections of this manual.

## Manually Disconnecting / Establishing a Wireless Link

As previously noted, the wireless headset base stations have been configured to automatically establish a link between the headset and base station when the headset is removed from the base station. The following information describes how to place the headset in standby mode and then reconnect it to the base station.

When the headset is linked to the base station, the Headset LED flashes blue slowly and the Link LED  on the base station is lit up blue.

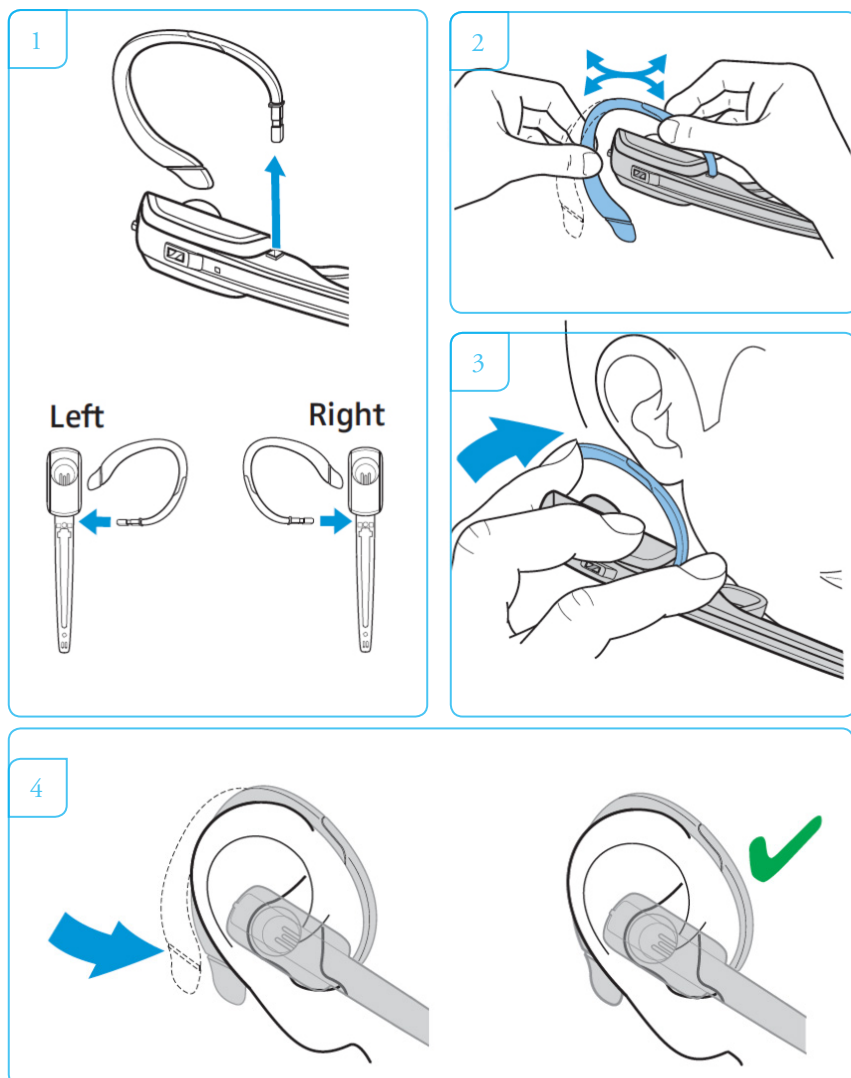
- To disconnect the link and put the headset into standby mode, press the link button on the headset. The Headset LED and the Link LED  on the base station will turn off.
- To reestablish the link, press the link button on the headset. The Headset LED will once again flash blue slowly and the Link LED  on the base station will lite up blue.



# Adjusting the Wearing Styles

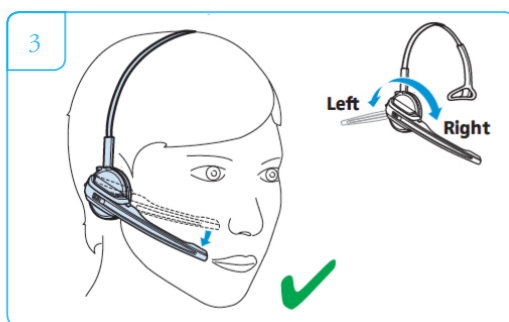
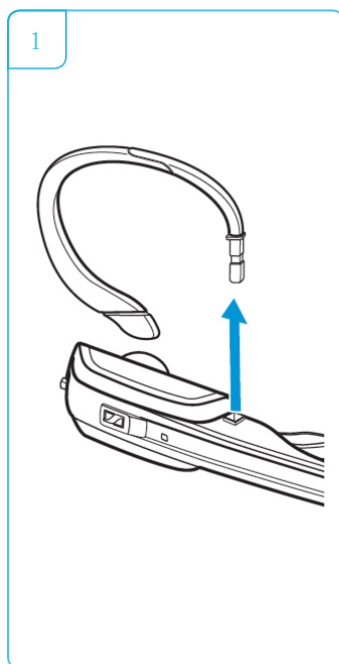
## Using the headset with the ear hook

1. Insert the ear hook into the ear hook slot.
2. Shape the ear hook to the contour of your ear by bending it slightly.
3. Place the ear hook around your ear.
4. Bend the flexible ear hook so that the headset fits comfortably and securely on your ear.



## Using the headset with the headband

1. Remove the ear hook by carefully pulling it upwards.
2. Attach the headset to the headset holder of the headband.
3. Rotate the microphone boom and adjust the headset so that the ear pad rests comfortably on your right or left ear.





# Making Audio Adjustments

## Adjusting the volume



### WARNING

#### Hearing damage due to high volume!

Listening at high volume levels for long periods can lead to permanent hearing defects.

- Set the volume to a low level before putting on the headset.
- Do not continuously expose yourself to high volumes.

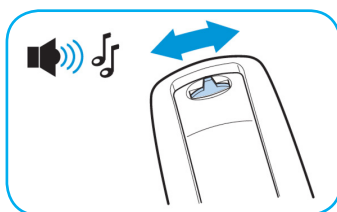
## Adjusting the volume of the audio signal

- Make sure that a link is established between headset and base station (the Link LED



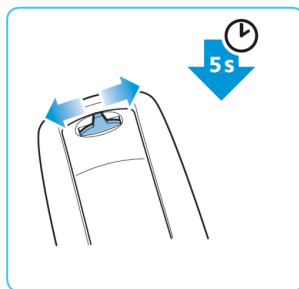
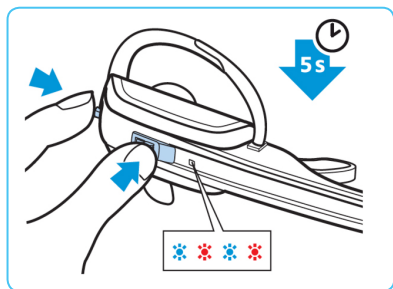
on the base station lights up blue). If necessary, press the link button on the headset.

- To adjust the volume, move the Audio button as shown in the diagram,. When the minimum or maximum volume is reached, you hear a double beep in the headset.




## Swapping the direction of the volume buttons

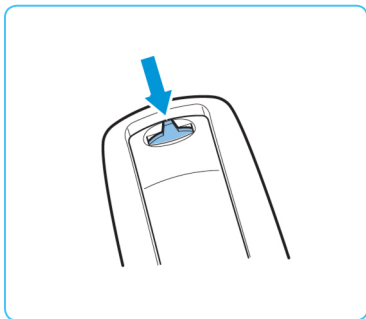
- On the Audio button, check which direction is assigned “volume down”.
- Simultaneously press and hold the Link button and the Audio button for 5 seconds.  
The Headset LED alternately flashes blue/red.
- Push the Audio button in the direction “volume down” until the Headset LED goes off. The direction of the volume up/down function of the Audio button is changed. The headset switches to standby mode.



## Muting the headset's microphone


- Press the Audio button.

The microphone is muted. While the microphone is muted, the Link LED  on the base station flashes red.




## Unmuting the headset's microphone

- Press the Audio button.

You hear a beep in the headset. The muting is canceled and the Link LED  on the base station lights up blue.

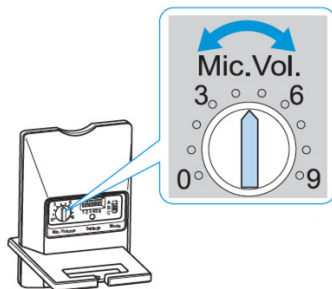
## If you leave the DECT range

In most environments, the range between the headset and base station is up to 33 ft. If, during usage, the audio quality deteriorates or the link breaks down completely, you hear a descending sequence of beeps in the headset. The Link LED  on the base station lights up red.

- Re-enter the DECT range of the base station within 30 seconds.  
You hear a ring tone in the headset.
- Press the Link button on the headset to resume the call.

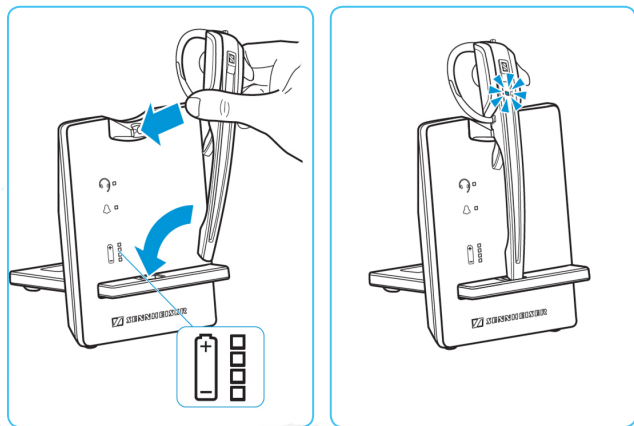
## Adjusting the microphone (transmission) volume

The microphone volume has been preset to 6. In most cases, this should be satisfactory. If the other people in the conversation cannot hear the user of a particular headset at a comfortable level, the microphone sensitivity can be increased or decreased by adjusting the “Mic. Vol.” control on the rear of the base station assigned to that headset.







# Charging the Headset

Always return to the headset to it's assigned base station to ensure that it is fully charged and ready for use. The intelligent battery charging technology prevents over-charging.



- Place the headset into the magnetic holder of the base station. The Headset LED lights up blue and the rechargeable battery is being charged. The Charge status LED on the base station indicates the charge status:

LED segment (white = lit up)	Required charging time	Corresponds to a talk time of	
		Wideband	Narrowband
	approx. 10 min.	approx. 2 hrs	approx. 3 hrs
	approx. 20 min.	approx. 4 hrs	approx. 6 hrs
	approx. 40 min.	approx. 6 hrs	approx. 9 hrs
	approx. 60 min.	approx. 8 hrs	approx. 12 hrs

Shortly before the rechargeable battery is about to run flat, only one LED segment lights up weakly. The Headset LED flashes red and you hear three beeps. You have several minutes of battery reserve. When the rechargeable battery is flat, the headset switches off.



If the headset is outside the range of the base station, it will switch off after 30 minutes in order to conserve battery power.

# Cleaning and Maintaining the Headset System

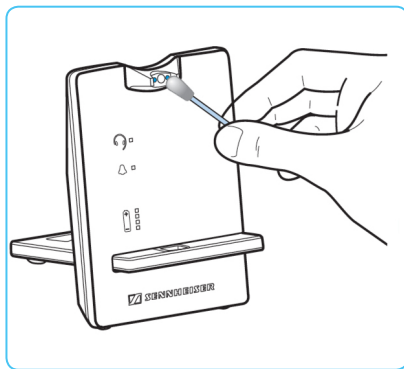
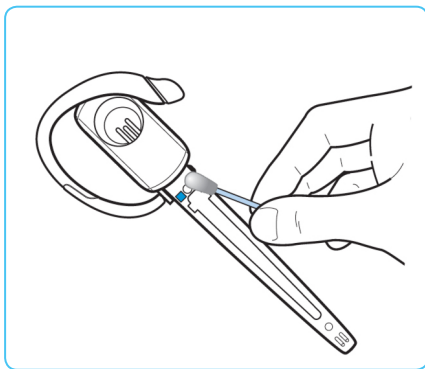
## CAUTION

### Damage to the product due to liquids!

Liquids entering the product can short-circuit the electronics or damage the mechanics.

Solvents or cleansing agents can damage the surface of the product.

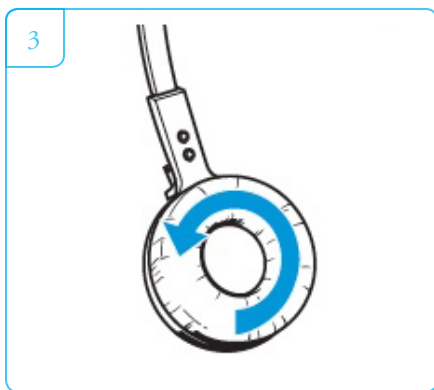
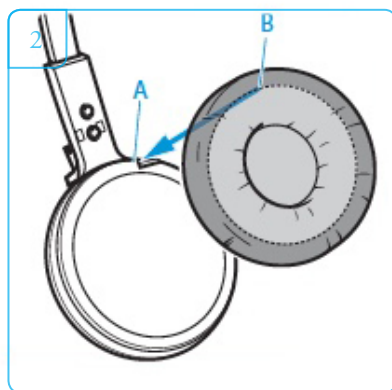
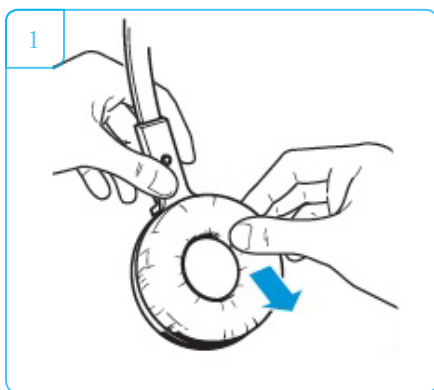
- Keep all liquids far away from the product.
- Do not use any solvents or cleansing agents.
- Before cleaning, switch the product off and disconnect the base station from the mains power supply.
- Only use a dry and soft cloth to clean the product.
- Clean the charging contacts of the base station and the charging contacts of the headset from time to time using e.g. a cotton swab.



## Replacing the Ear Pads

For reasons of hygiene, you should replace the ear pads from time to time. Please contact Vis-A-Vis at 800-319-6014 or email [support@vitalinq.com](mailto:support@vitalinq.com) for spare ear pads.

1. Carefully remove the old ear pad from the ear cup. Make sure that the fastening ring of the old ear pad is also removed from the ear cup.
2. Pull the collar **B** of the ear pad over the notch **A** of the headband.
3. Turn the ear pad counter-clockwise over the notch until the collar completely surrounds the ear cup.



# Replacing the Headset's Rechargeable Battery

## CAUTION

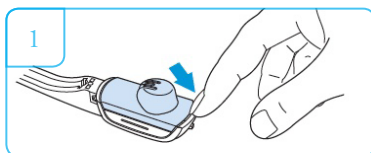
### Damage to the product due to improper handling

The cables can be kinked or damaged if you open the battery compartment too jerkily.

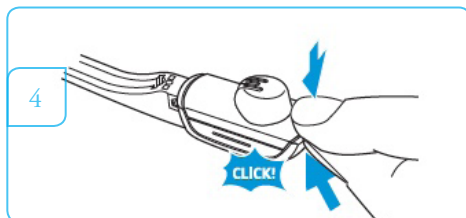
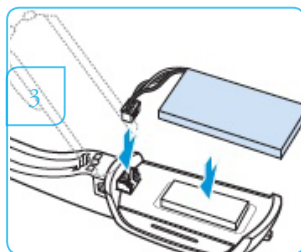
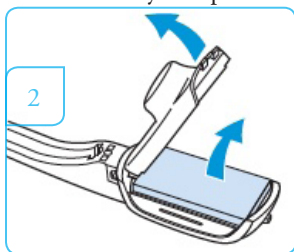
- Carefully open the battery compartment and loosen the connector plug of the rechargeable battery.

Please contact Vis-A-Vis at 800-319-6014 or email [support@vitalinq.com](mailto:support@vitalinq.com) for spare rechargeable batteries.

1. Remove the ear hook or the headband and open the battery compartment.



2. Carefully move the battery compartment cover in the direction of the arrow until you overcome a slight resistance. Remove the rechargeable battery and carefully loosen the connector plug.
3. Insert the connector plug of the new rechargeable battery into the connection socket. Observe correct orientation of the connector plug.
4. Close the battery compartment.



## If a Problem Occurs

Problem	Possible cause	Possible Solution
The Green LED on the front of the console is off.	94W console power cord is not connected to the AC power outlet or to the console.	Check to make sure power cord is connected to outlet and console and that there is power at the outlet.
	The power supply inside the console is faulty.	Contact Vis-A-Vis.
The headset is placed into the base station but the charge status LED is off.	Base station has no power.	Check connection of combination ethernet/power cable to console and base station.
	Rechargeable battery is deep discharged.	Wait several minutes until the Charge status LED lights up.
Link between base station and headset cannot be established.	Headset is not paired with the base station, the Link LED light up red.	Place the headset into its assigned base station.
Bad radio link between headset and base station.	Transmission range is exceeded.	Reduce the distance between headset and base station.
		Set radio range to long range (DIP switch 3 "up"). Note this will reduce battery life.
Noise interference and connection loss.	Microphone rubs on the cheek or perhaps the beard.	Bend the microphone boom so that the microphone is about 0.8 - 1.2" from the corner of your mouth.
The rechargeable battery cannot be charged.	Charging contacts of the headset or base station are dirty.	Clean the charging contacts on the headset and on the base station.
	Rechargeable battery is defective.	Replace the defective rechargeable battery with a new one. Contact Vis-A-Vis.
	Headset is not properly placed into the magnetic holder of the base station.	Check if the headset is properly placed into the magnetic holder.
Bad audio quality; the other party sounds too low or too loud.	Microphone sensitivity is not correctly adjusted.	Adjust the microphone sensitivity.

If a problem occurs that is not listed in the table above or if the problem cannot be solved with any of the suggested solutions, please contact Vis-A-Vis at:

800-319-6014

or email

Support@Vitalinq.com

## NOTES





